

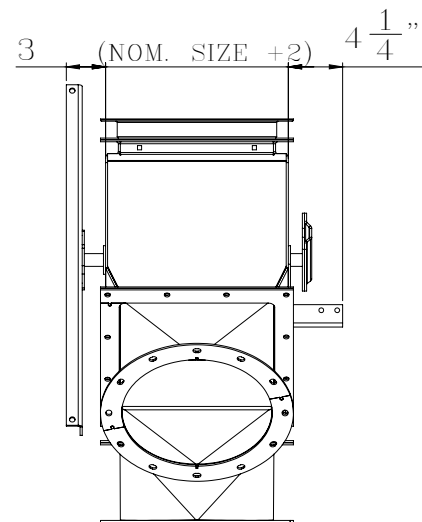
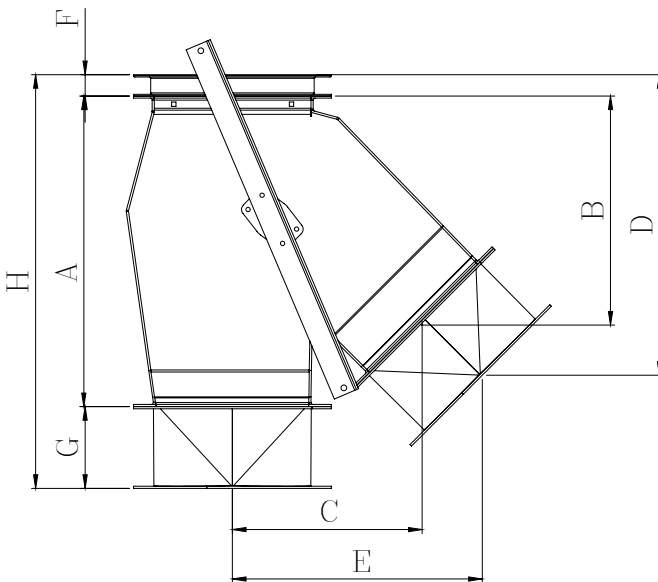
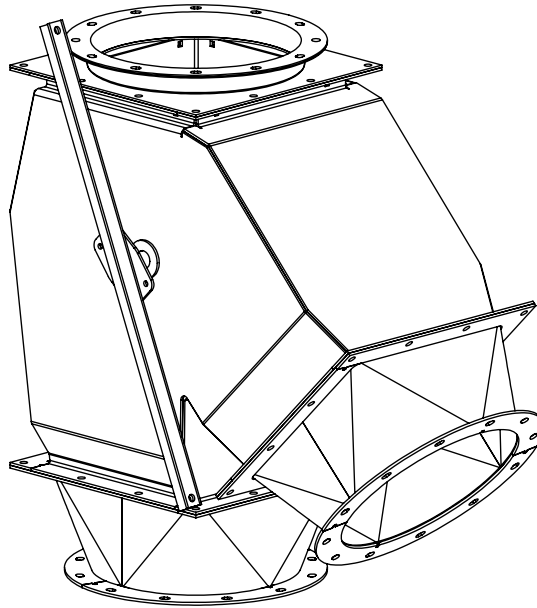


FULL FLOW PAN STYLE K-VALVES



CAD Models Available
Overlay and Layouts Available

* SIGNATURE PRODUCT *

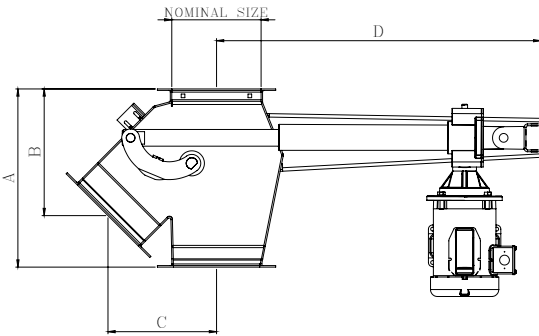


MANUAL

PART NUMBER	NOMINAL SIZE	A	B	C	D	E	F	G	H
VAKS06xx45xx	6	13	9--3/8	8--1/8	14--7/16	11--3/4	1--3/8	5--1/4	19--5/8
VAKS08xx45xx	8	16	11--3/8	9--3/4	16--7/16	13--5/16	1--3/8	5--1/4	22--5/8
VAKS10xx45xx	10	19--7/8	14--1/4	12--5/8	19--5/16	16--7/16	1--3/8	5--1/4	26--1/2
VAKS12xx45xx	12	23--3/4	17	15--1/4	23	19--5/8	1--5/8	6--1/4	31--5/8
VAKS14xx45xx	14	27--3/4	19--3/4	17	24	21--5/16	1--5/8	6--1/4	35--5/8
VAKS16xx45xx	16	-----CONSULT FACTORY-----							

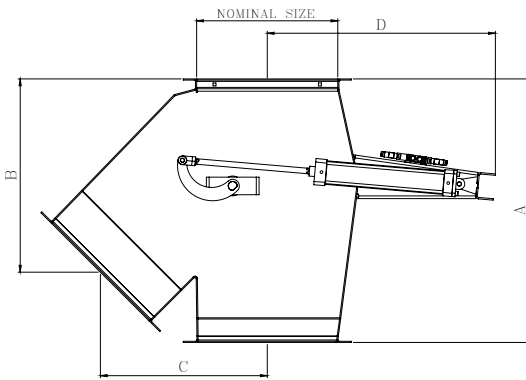


*** SIGNATURE PRODUCT ***



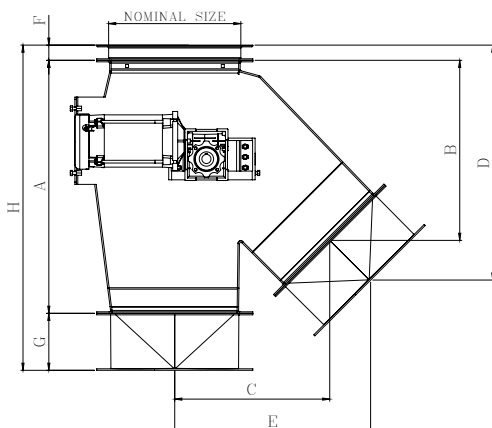
ELECTRIC

PART NUMBER	NOMINAL SIZE	A	B	C	D
VAKS06xx45xx-Ex	6	13	9--3/8	8--1/8	29
VAKS08xx45xx-Ex	8	16	11--3/8	9--3/4	29--1/8
VAKS10xx45xx-Ex	10	19--7/8	14--1/4	12--5/8	28--3/4
VAKS12xx45xx-Ex	12	23--3/4	17	15--1/4	28--5/16
VAKS14xx45xx-Ex	14	27--3/4	19--3/4	17	27--7/8
VAKS16xx45xx-Ex	16	-----CONSULT FACTORY-----			



PNEUMATIC

PART NUMBER	NOMINAL SIZE	A	B	C	D
VAKS06xx45xx-P	6	13	9--3/8	8--1/8	30
VAKS08xx45xx-P	8	16	11--3/8	9--3/4	30--1/2
VAKS10xx45xx-P	10	19--7/8	14--1/4	12--5/8	29--1/2
VAKS12xx45xx-P	12	23--3/4	17	15--1/4	29--1/2
VAKS14xx45xx-P	14	27--3/4	19--3/4	17	28
VAKS16xx45xx-P	16	-----CONSULT FACTORY-----			



GEAR DRIVE

PART NUMBER	NOMINAL SIZE	A	B	C	D	E	F	G	H
VAKS06xx45GG	6	13	9--3/8	8--1/8	14--7/16	11--3/4	1--3/8	5--1/4	19--5/8
VAKS08xx45GG	8	16	11--3/8	9--3/4	16--7/16	13--5/16	1--3/8	5--1/4	22--5/8
VAKS10xx45GG	10	19--7/8	14--1/4	12--5/8	19--5/16	16--7/16	1--3/8	5--1/4	26--1/2
VAKS12xx45GG	12	23--3/4	17	15--1/4	23	19--5/8	1--5/8	6--1/4	31--5/8
VAKS14xx45GG	14	27--3/4	19--3/4	17	24	21--5/16	1--5/8	6--1/4	35--5/8
VAKS16xx45GG	16	-----CONSULT FACTORY-----							

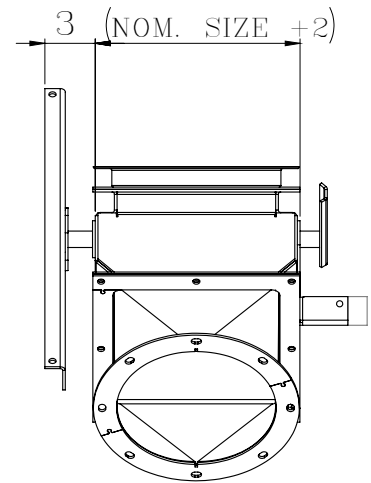
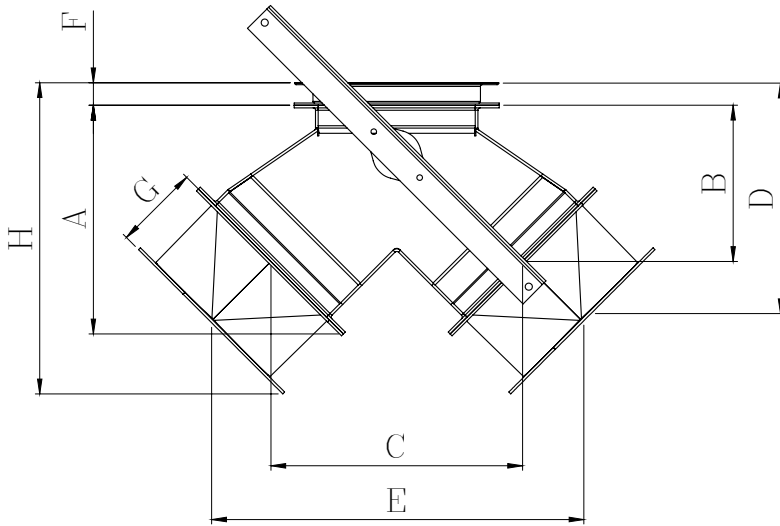
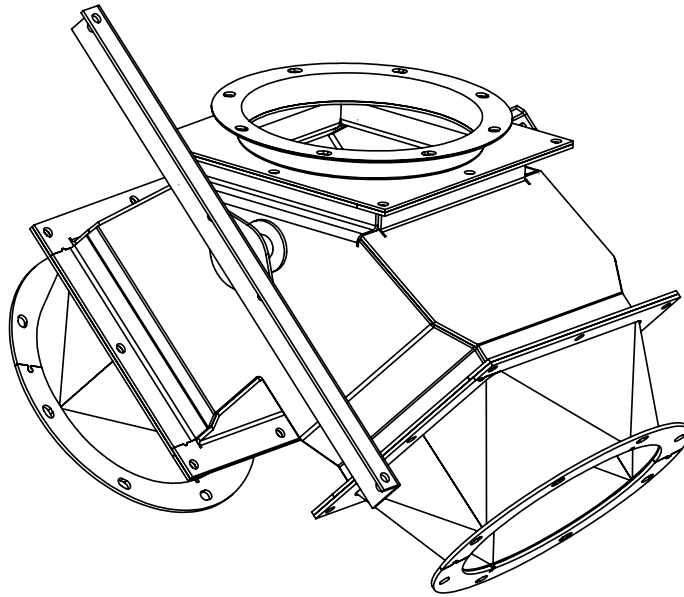
FULL FLOW PAN STYLE Y-VALVES



* SIGNATURE PRODUCT *



CAD Models Available
Overlay and Layouts Available



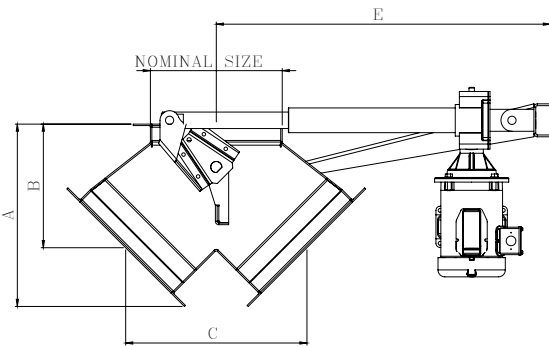
MANUAL

PART NUMBER	NOMINAL SIZE	A	B	C	D	E	F	G	H
VAYS06xx45xx	6	10	7	10	12	17--7/16	1--3/8	5--1/4	15--1/8
VAYS08xx45xx	8	11--3/8	7--5/8	11--7/8	12--5/8	19--1/4	1--3/8	5--1/4	16--1/2
VAYS10xx45xx	10	14	9--5/8	15--1/2	14--5/8	23	1--3/8	5--1/4	19--1/8
VAYS12xx45xx	12	16--5/8	11--1/4	16--1/2	17--5/16	25--5/16	1--5/8	6--1/4	22--5/8
VAYS14xx45xx	14	18--1/2	12--1/4	18--1/2	18--5/8	27--5/16	1--5/8	6--1/4	24--5/8
VAYS16xx45xx	16	-----CONSULT FACTORY-----							



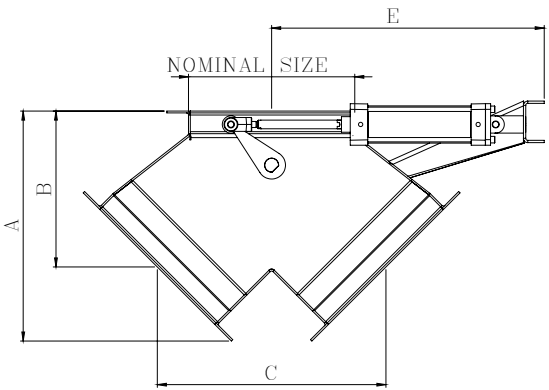
*** SIGNATURE PRODUCT ***

ELECTRIC



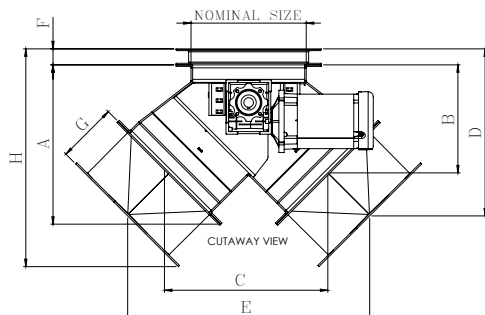
PART NUMBER	NOMINAL SIZE	A	B	C	D	E
VAYS06xx45GE	6	10	7	10	12	---
VAYS08xx45GE	8	11--3/8	7--5/8	11--7/8	12--5/8	---
VAYS10xx45GE	10	14	9--5/8	15--1/2	14--5/8	---
VAYS12xx45GE	12	16--5/8	11--1/4	16--1/2	17--5/16	30--1/2
VAYS14xx45GE	14	18--1/2	12--1/4	18--1/2	18--5/8	---
VAYS16xx45GE	16	-----CONSULT FACTORY-----				

PNEUMATIC



PART NUMBER	NOMINAL SIZE	A	B	C	D	E
VAYS06xx45GE	6	10	7	10	12	---
VAYS08xx45GE	8	11--3/8	7--5/8	11--7/8	12--5/8	---
VAYS10xx45GE	10	14	9--5/8	15--1/2	14--5/8	---
VAYS12xx45GE	12	16--5/8	11--1/4	16--1/2	17--5/16	19--3/4
VAYS14xx45GE	14	18--1/2	12--1/4	18--1/2	18--5/8	---
VAYS16xx45GE	16	-----CONSULT FACTORY-----				

GEAR DRIVE



PART NUMBER	NOMINAL SIZE	A	B	C	D	E	F	G	H
VAYS06xx45GG	6	10	7	10	12	17--7/16	1--3/8	5--1/4	15--1/8
VAYS08xx45GG	8	11--3/8	7--5/8	11--7/8	12--5/8	19--1/4	1--3/8	5--1/4	16--1/2
VAYS10xx45GG	10	14	9--5/8	15--1/2	14--5/8	23	1--3/8	5--1/4	19--1/8
VAYS12xx45GG	12	16--5/8	11--1/4	16--1/2	17--5/16	25--5/16	1--5/8	6--1/4	22--5/8
VAYS14xx45GG	14	18--1/2	12--1/4	18--1/2	18--5/8	27--5/16	1--5/8	6--1/4	24--5/8
VAYS16xx45GG	16	-----CONSULT FACTORY-----							

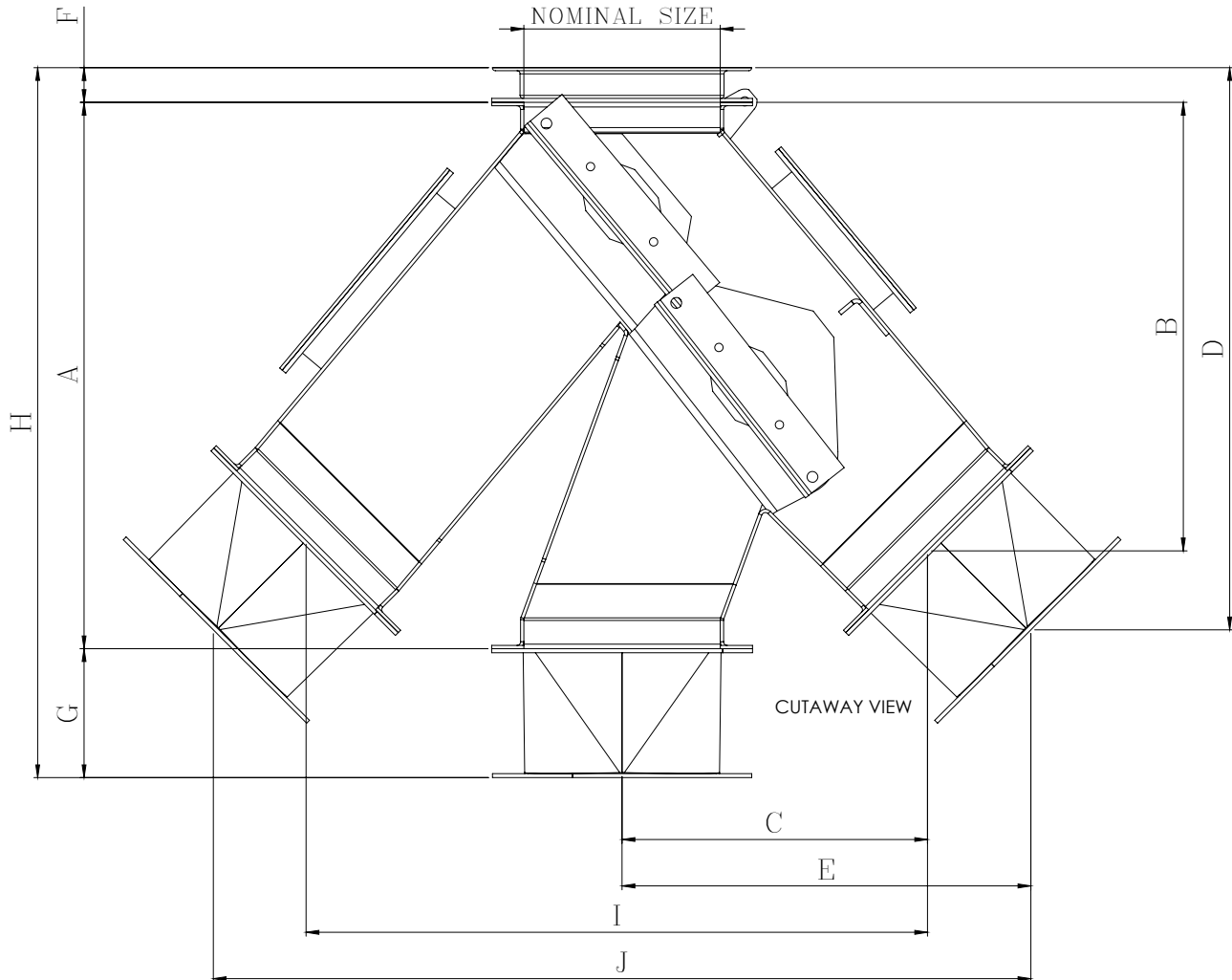


FULL FLOW PAN STYLE 3-WAY VALVES

* SIGNATURE PRODUCT *



CAD Models Available
Overlay and Layouts Available



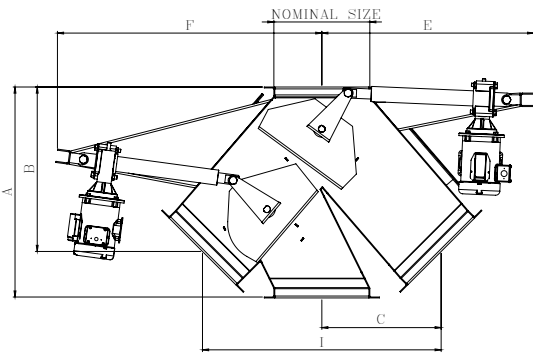
MANUAL

PART NUMBER	NOMINAL SIZE	A	B	C	D	E	F	G	H	I	J
VATS06xx45xx	6	17-1/2	17-7/8	39698	17-7/16	13-1/2	1--3/8	5--1/4	24-1/8	19-5/8	27-1/8
VATS08xx45xx	8	22-1/4	17-7/8	13-1/2	23	17	1--3/8	5--1/4	29	25-5/8	33-1/8
VATS10xx45xx	10	27-3/4	23	17-1/8	27-5/8	20-5/8	1--3/8	5--1/4	34-7/16	34	41-5/16
VATS12xx45xx	12	29	23-5/16	16	29	20-3/8	1--5/8	6--1/4	37	30-5/8	39-1/2
VATS14xx45xx	14	31-3/8	24-3/4	17-3/4	30-1/2	22-1/4	1--5/8	6--1/4	39-3/8	35-3/4	44-1/2
VATS16xx45xx	16	38-5/8	31-3/8	20-3/4	39-1/2	27-3/4	1--5/8	6--1/4	50-1/4	41-1/2	55-5/8

FULL FLOW PAN STYLE 3-WAY VALVES

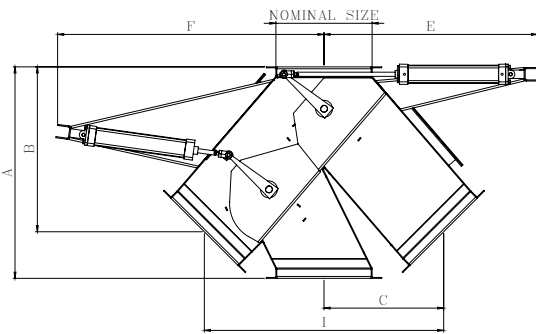


* SIGNATURE PRODUCT *



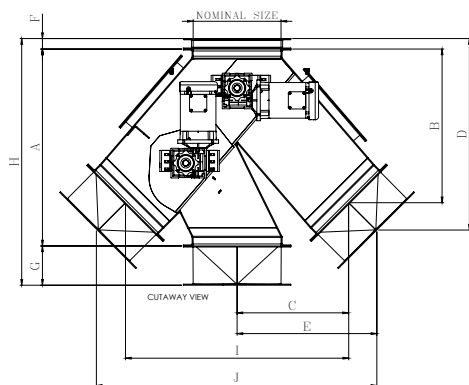
ELECTRIC

PART NUMBER	NOMINAL SIZE	A	B	C	D	E	F	I
VATS06xx45xx	6	17-1/2	17-7/8	39698	17-7/16	29--1/2	33--1/8	19-5/8
VATS08xx45xx	8	22-1/4	17-7/8	13-1/2	23	---	---	25-5/8
VATS10xx45xx	10	27-3/4	23	17-1/8	27-5/8	---	---	34
VATS12xx45xx	12	29	23-5/16	16	29	31--1/2	38--5/16	30-5/8
VATS14xx45xx	14	31-3/8	24-3/4	17-3/4	30-1/2	31--1/2	39--5/16	35-3/4
VATS16xx45xx	16	38-5/8	31-3/8	20-3/4	39-1/2	31--1/2	41	41-1/2



PNEUMATIC

PART NUMBER	NOMINAL SIZE	A	B	C	D	E	F	I
VATS06xx45xx	6	17-1/2	17-7/8	39698	17-7/16	---	33--1/8	19-5/8
VATS08xx45xx	8	22-1/4	17-7/8	13-1/2	23	---	---	25-5/8
VATS10xx45xx	10	27-3/4	23	17-1/8	27-5/8	---	---	34
VATS12xx45xx	12	29	23-5/16	16	29	---	---	30-5/8
VATS14xx45xx	14	31-3/8	24-3/4	17-3/4	30-1/2	31--5/8	39--1/2	35-3/4
VATS16xx45xx	16	38-5/8	31-3/8	20-3/4	39-1/2	---	---	41-1/2

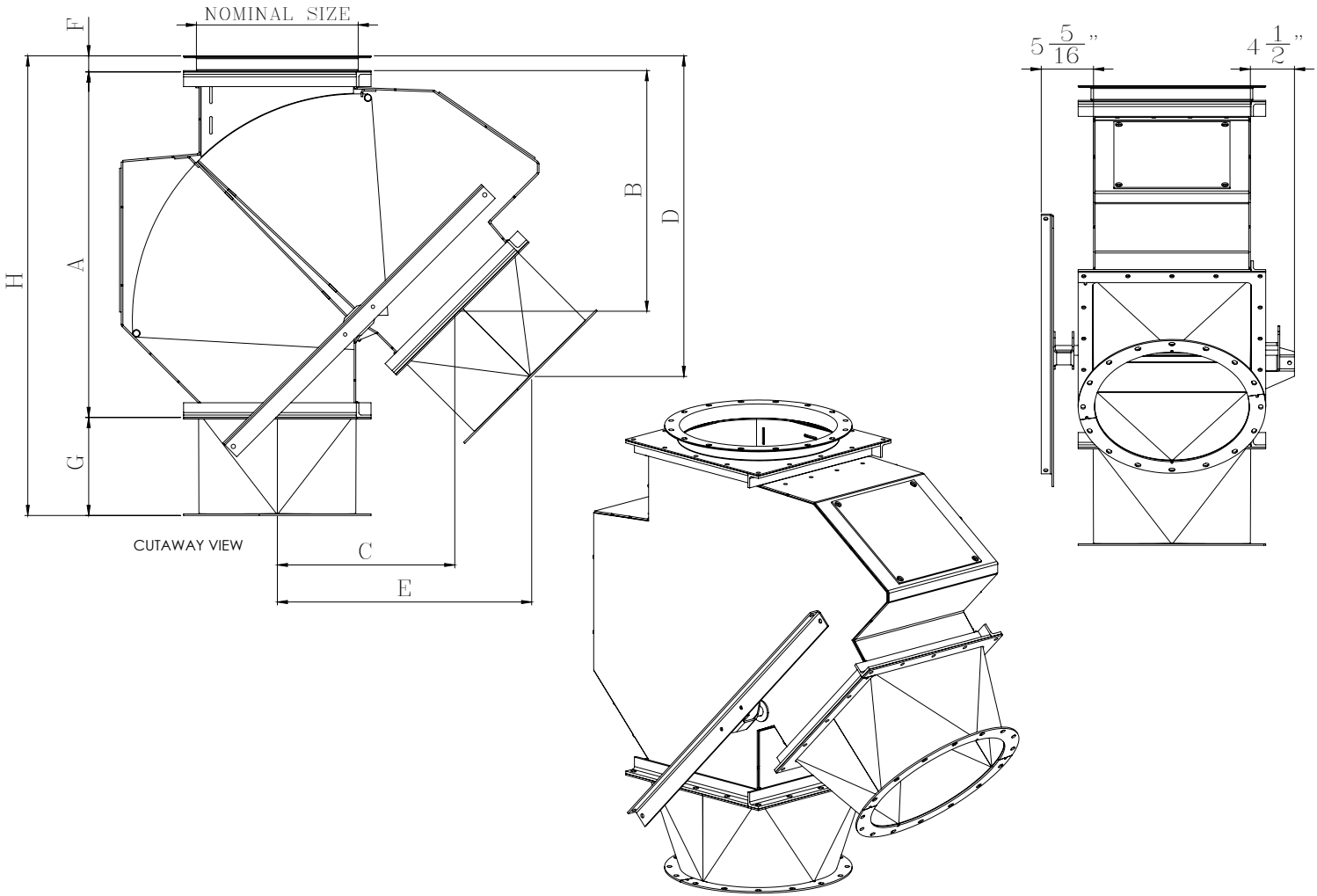


GEAR DRIVE

PART NUMBER	NOMINAL SIZE	A	B	C	D	E	F	G	H	I	J
VATS060845GG	6	17-1/2	17-7/8	39698	17-7/16	13-1/2	1--3/8	5--1/4	24-1/8	19-5/8	27-1/8
VATS080845GG	8	22-1/4	17-7/8	13-1/2	23	17	1--3/8	5--1/4	29	25-5/8	33-1/8
VATS100845GG	10	27-3/4	23	17-1/8	27-5/8	20-5/8	1--3/8	5--1/4	34-7/16	34	41-5/16
VATS120845GG	12	29	23-5/16	16	29	20-3/8	1--5/8	6--1/4	37	30-5/8	39-1/2
VATS140845GG	14	31-3/8	24-3/4	17-3/4	30-1/2	22-1/4	1--5/8	6--1/4	39-3/8	35-3/4	44-1/2
VATS160845GG	16	38-5/8	31-3/8	20-3/4	39-1/2	27-3/4	1--5/8	6--1/4	50-1/4	41-1/2	55-5/8



* SIGNATURE PRODUCT *



• CALL FOR PRICING •

MANUAL

PART NUMBER	NOMINAL SIZE	A	B	C	D	E	F	G	H
VAKSD06xx45xx	6	15--7/8	11	8	16	11--7/8	1--3/8	5--1/4	22
VAKSD08xx45xx	8	19--1/2	14--5/8	10--1/2	19--1/4	16--5/8	1--3/8	5--1/4	26--1/8
VAKSD10xx45xx	10	23	16--5/8	12	21--1/4	16--1/4	1--3/8	5--1/4	29--5/8
VAKSD12xx45xx	12	23--3/4	19--1/4	14--3/4	25--1/8	19--1/4	1--5/8	6--1/4	34--5/8
VAKSD14xx45xx	14	31--1/8	21--1/4	16--5/16	27--1/4	20--7/8	1--5/8	6--1/4	39
VAKSD16xx45xx	16	35--1/4	24	18--7/8	32--7/8	25--7/8	1--5/8	6--1/4	46--7/8
VAKSD18xx45xx	18	39--3/8	28--1/4	22--1/4	36--1/2	29--1/8	1--5/8	10	51
VAKSD20xx45xx	20	43--1/8	31--1/8	22--1/4	39--5/16	31--5/8	1--5/8	10	54--3/4
VAKSD22xx45xx	22	46--3/4	35--5/8	26--7/8	42--1/8	34	1--5/8	10	58--1/2
VAKSD24xx45xx	24	50	37	27--1/2	43--1/4	34--1/2	1--5/8	10	61--5/8
VAKSD30xx45xx	30	61--3/8	42--1/8	33--1/2	51--3/8	40--1/2	2--1/8	10	73--1/2

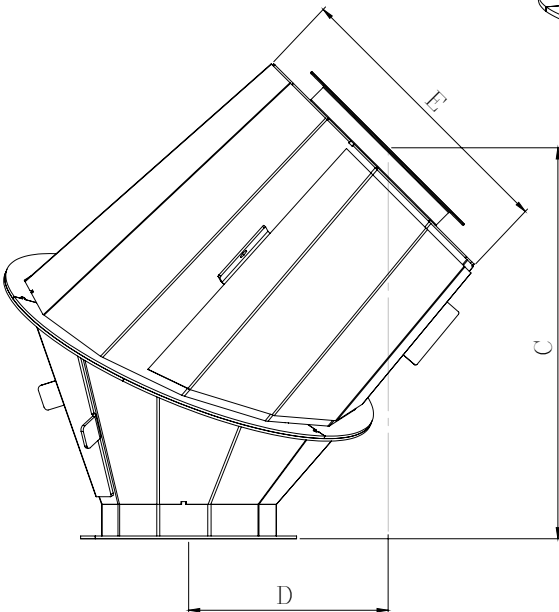
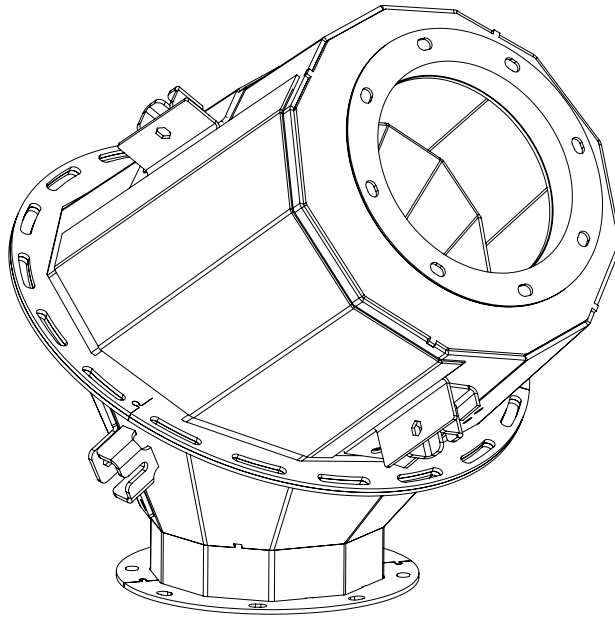


DBAR CUSHION BOX

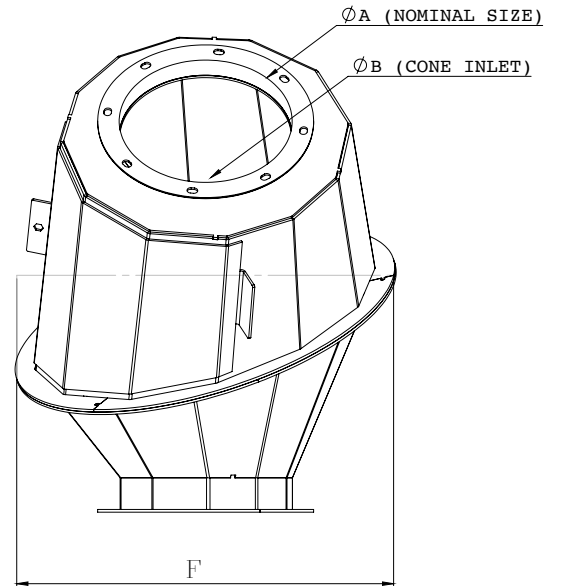
* SIGNATURE PRODUCT *



CAD Models Available
Overlay and Layouts Available



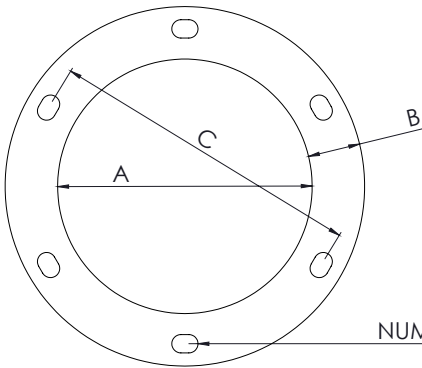
DIMENSIONS SHOWN @ 45DEG



PART NUMBER	A	B	C	D	E	F
DBAR0808GDx	8	9	19--1/8	6--3/4	14	16
DBAR1008GDx	10	11	22--3/4	9--1/8	17	20
DBAR1208GDx	12	13	26--3/4	11--1/8	20	24
DBAR1408GDx	14	15	30--7/8	12--7/8	23	28
DBAR1608GDx	16	17	34--7/8	14--5/8	26	32
DBAR1808GDx	18	19	39	16--3/8	28	40
DBAR2008GDx	20	21	43	18--1/8	32	44

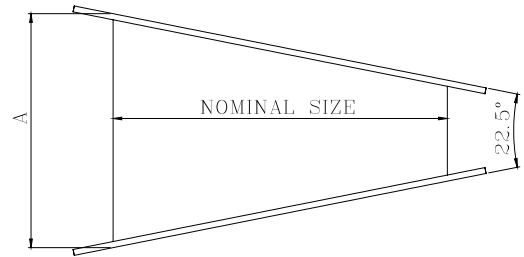
PRODUCT DIMENSIONS AND SPECIFICATIONS

ANGLE IRON RINGS (FLAR)



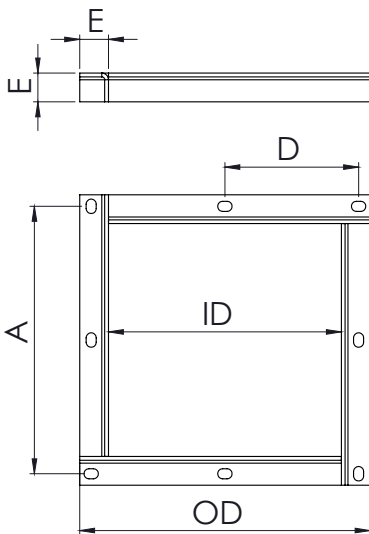
SIZES 6"-10" ARE: 13/32" SLOT X 5/8" HOLE
 SIZES 12"-24" ARE: 3/16" SLOT X 7/16" HOLE
 RING HEIGHT IS SAME AS DIMENSION B

ADJUSTABLE ELBOW (ELTE)



SIZE	A	B	C	# HOLES	WEIGHT
6"	6 1/16"	1 1/4"	7 1/2"	6	1.8
8"	8 1/16"	1 1/4"	9 1/2"	8	2.3
10"	10 1/16"	1 1/4"	11 1/2"	8	2.8
12"	12 1/8"	1 1/2"	13 13/16"	12	6
14"	14 1/8"	1 1/2"	15 13/16"	12	7
16"	16 1/8"	1 1/2"	18 1/8"	16	8
18"	18 1/8"	1 1/2"	20 1/8"	16	8.5
20"	20 1/8"	1 1/2"	22 1/8"	20	9.5
22"	22 3/8"	1 1/2"	24 1/8"	20	10.8
24"	24 3/8"	1 1/2"	26 1/8"	20	11.5

SIZE	A
6"	5"
8"	6"
10"	7"
12"	8"
14"	9"
16"	10"



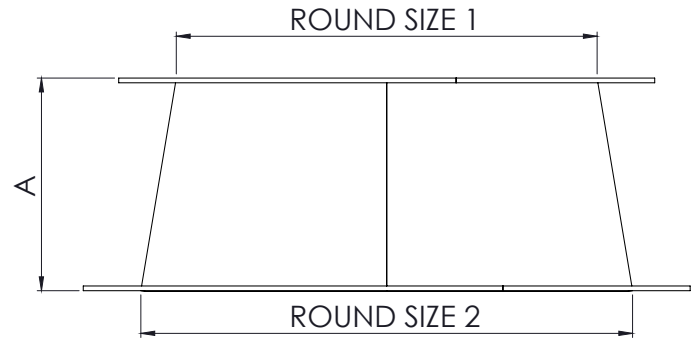
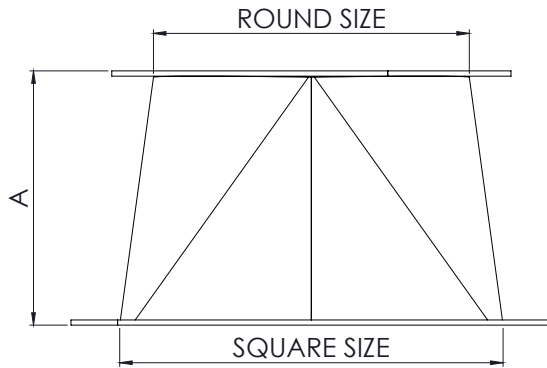
ANGLE IRON FLANGE (FLAS)

SIZE	A	O.D.	I.D.	D	E
6"	7 5/8"	8 5/8"	6 1/8"	3 13/16"	1 1/4"
8"	9 5/8"	10 5/8"	8 1/8"	4 13/16"	1 1/4"
10"	11 5/8"	12 5/8"	10 1/8"	5 13/16"	1 1/4"
12"	14"	15 1/8"	12 1/8"	4 21/32"	1 1/2"
14"	16"	17 1/8"	14 1/8"	4"	1 1/2"
16"	18"	19 1/8"	16 1/8"	4 1/2"	1 1/2"
18"	20"	21 1/8"	18 1/8"	5"	1 1/2"
20"	22"	23 1/8"	20 1/8"	5 1/2"	1 1/2"
22"	24"	25 1/8"	22 1/8"	4"	1 1/2"
24"	26"	27 1/8"	24 1/8"	4 21/64"	1 1/2"

ALL SIZES: 5/8" SLOT X 7/16" HOLE

PRODUCT DIMENSIONS AND SPECIFICATIONS

SQUARE TO ROUND (TRSR) AND ROUND TO SQUARE (TRSS) TRANSITIONS



SQUARE	ROUND	HEIGHT
6"	6"	5 1/4"
8"	6"	6 3/4"
8"	8"	5 1/4"
10"	8"	6 3/4"
10"	10"	5 1/4"
12"	10"	8"
12"	12"	6 1/4"
14"	10"	10"
14"	12"	10"
14"	14"	6 1/4"
16"	10"	10"
16"	12"	10"
16"	14"	10"
16"	16"	10"
18"	14"	10"
18"	16"	10"
18"	18"	10"
20"	16"	10"
20"	18"	10"
20"	20"	10"
24"	20"	10"
24"	22"	10"
24"	24"	10"

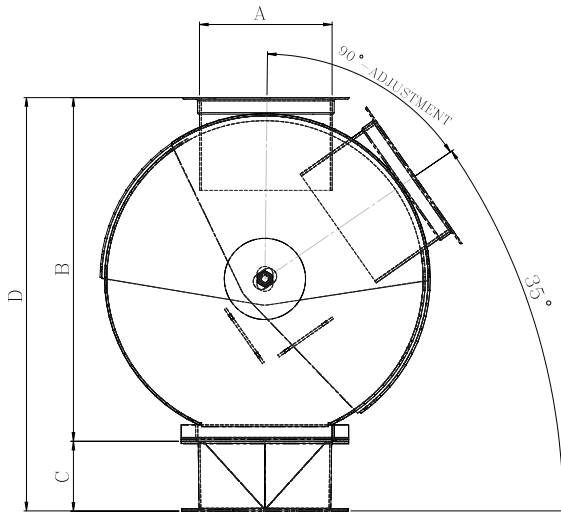
ROUND TO ROUND REDUCERS

- 2" Reduction Reducers are 6" tall
- 4" Reduction Reducers are 12" tall
- 6" Reduction Reducers are 18" tall

• Square to Round and Square to Square Transitions have the same height.

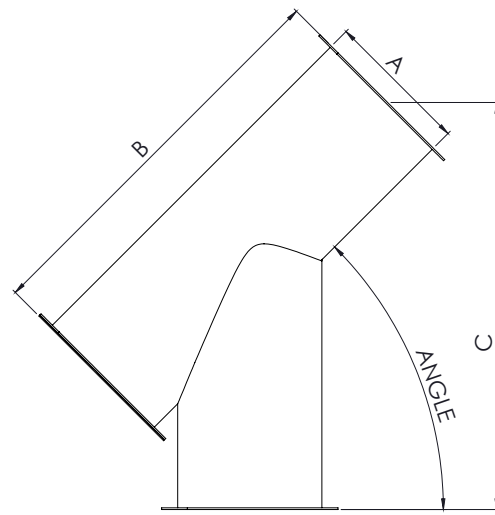
PRODUCT DIMENSIONS AND SPECIFICATIONS

ROUND CUSHION BOX (DBAC)



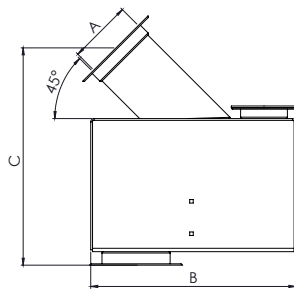
SIZE (A)	B	C
6"	20 5/8"	7 3/8"
8"	22 3/8"	9 3/8"
10"	26"	11 3/8"
12"	30 7/8"	13 3/8"
14"	31"	15 3/8"
16"	38 3/4"	17 3/8"

PIPE DEADBOX 45° (DBFP)



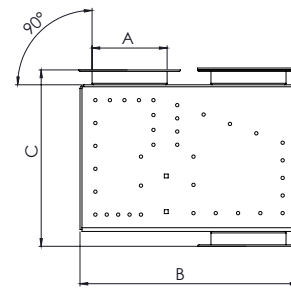
SIZE (A)	B	C
6"	18.4"	19"
8"	23.3"	24.3"
10"	28.5"	29.5"
12"	33.7"	35.2"
14"	38.7"	40.4"

BOX STYLE DEADBOX 45° (DBFB45)



SIZE (A)	B	C
6"	18 11/16"	20 11/16"
8"	24 5/16"	26 3/16"
10"	30"	31 13/16"
12"	35 11/16"	35 5/16"
14"	41 3/8"	38 7/8"

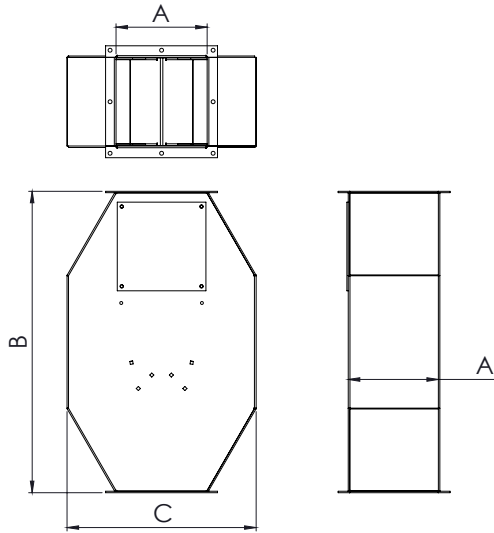
BOX STYLE DEADBOX 90° (DBFB90)



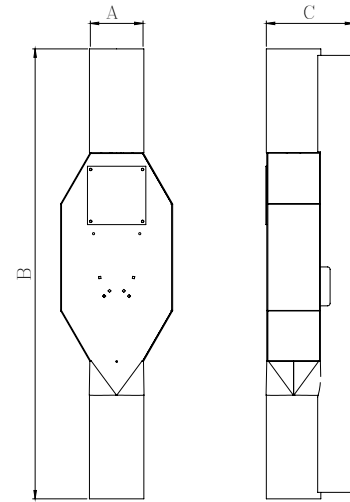
SIZE (A)	B	C
6"	18"	16"
8"	22"	20"
10"	26"	24"
12"	30"	26"
14"	34"	28"

PRODUCT DIMENSIONS AND SPECIFICATIONS

INLINE FLOW RETARDER (FRIS)



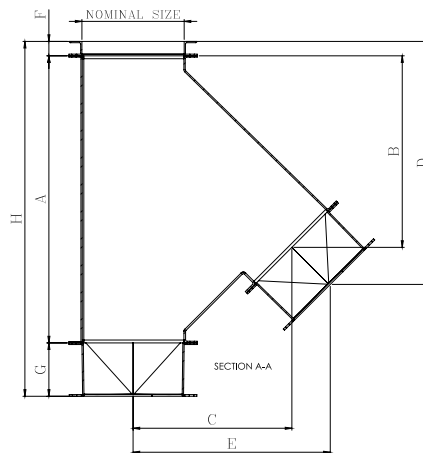
FLOW RETARDER W/WELDING SLEEVE (FRIR)



SIZE (A)	B	C
6"	26"	13"
8"	32"	17"
10"	34"	21"
12"	37"	25"
14"	40 1/2"	29"
16"	41"	32"
18"	45"	36"

SIZE (A)	B	C
6"	6"	62 3/8"
8"	8"	68 3/8"
10"	10"	70 3/8"
12"	12"	74 3/8"
14"	14"	78"

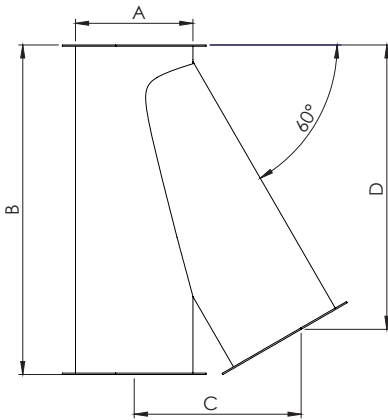
OVERFLOW VALVE (OVFS)



SIZE (A)	B	C
6"	22 1/2"	15"
8"	25 1/2"	17 8/8"
10"	28 1/4"	20 5/8"
12"	31"	23 1/4"
14"	34"	25 7/8"

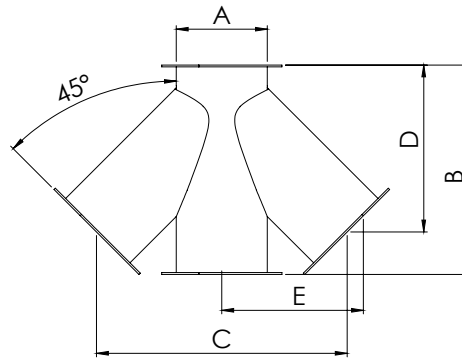
PRODUCT DIMENSIONS AND SPECIFICATIONS

**BRANCH (OFFSET)
BRPK**



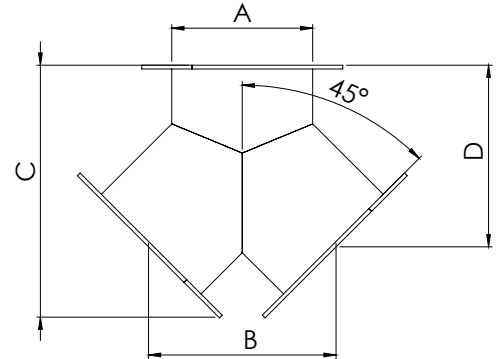
SIZE (A)	B	C	D
6"	16"	9"	1"3
8"	18"	11"	15"
10"	21"	13"	17"
12"	25"	15"	19"
14"	28"	17"	22"

**BRANCH (THREE-WAY)
BRPT**



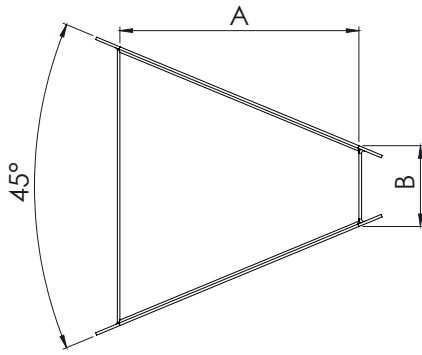
SIZE (A)	B	C	D	E
6"	16"	19"	13"	9"
8"	18"	22"	15"	11"
10"	21"	25"	17"	13"
12"	25"	30"	19"	15"
14"	28"	33"	22"	16"

**BRANCH (TWO-WAY)
BRPY**

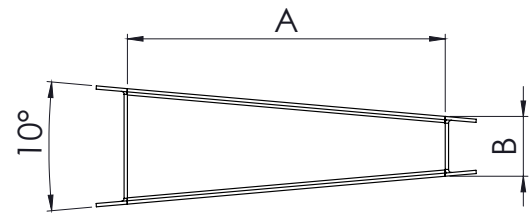


SIZE (A)	B	C	D	E
6"	16"	19"	13"	9"
8"	18"	22"	15"	11"
10"	21"	25"	17"	13"
12"	25"	30"	19"	15"
14"	28"	33"	22"	16"

SQUARE WEDGES (45° AND 10°) (WGFS)



SIZE	A
6"	4"
8"	4"
10"	4"
12"	5"
14"	5"
16"	5"



SIZE	A
6"	2.5"
8"	2.5"
10"	2.5"
12"	3"
14"	3"
16"	3"