

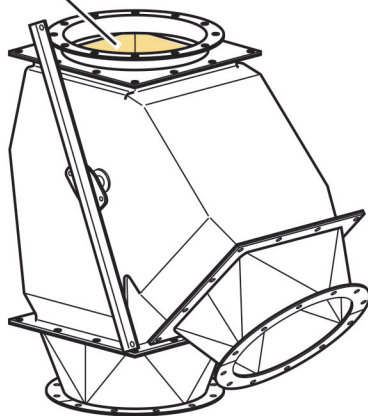
VALVES

Bulk Material Handling

Revolutionizing Grain Flow Equipment

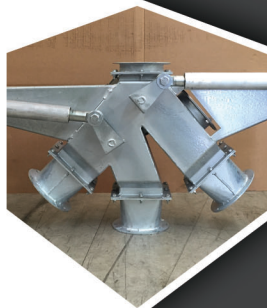
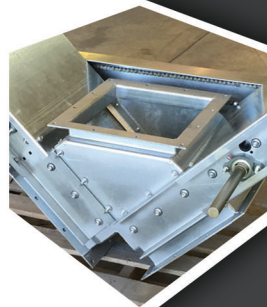
LCDM full flow valves are uniquely designed to handle the flow of grain without any restriction. Our “full flow” design allows you to maximize the flow of grain from the spout with no leakage. With several options to choose from, LCDM can accommodate all your grain flow needs.

Liners available in AR400 Steel, Urethane, and Ceramic Tile.



KEY FEATURES:

- Offset (K-Style), Two-way (Y-Style), Three way, Diverter
- Full flow design
- Handles the incoming capacity without restricting flow
- Standard galvanized body
- Multiple liner options
- Manual, electric and pneumatic drives available
- Seal kits available for feed applications
- Custom sizes and configurations available



VALVES SIGNATURE PRODUCT

STREAMLINE WORKFLOW AND SAVE ON LOST GRAIN COSTS



LCDM designs and builds grain flow products that are more efficient and easier to use. With grain distribution and material handling companies in mind, our full flow grain valves will help you streamline workflow and save on lost grain costs.

OUR RANGE OF FULL FLOW PAN STYLE VALVES INCLUDE:

- Manual Operation
- Gear Drive
- Electrically Actuated
- Pneumatic Operation
- Fully Customized Solutions



INNOVATION | ENGINEERING | QUALITY | CONSISTENCY | TURN-AROUND TIME

ADDITIONAL VALVE FEATURES:



Leak-Proof Inlet Collars



Stock Sizes From 6"-16"

