

Seelow

FEED BIN LEVEL MONITORING

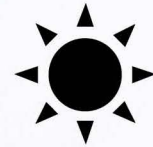


Easy to install
and Wireless



24/7 real-time
inventory
management

100% powered
by the sun




Patented dust
protection

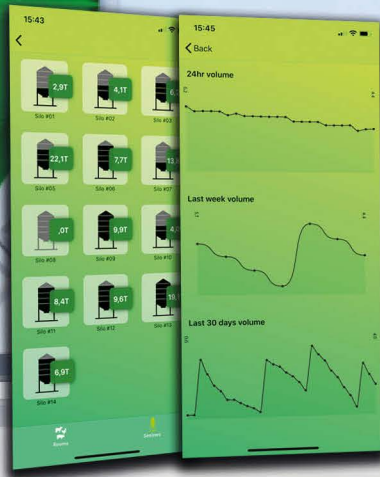
Wireless laser
sensor



Up to
197 feet
(60 m)

GET IT ON
 **Google Play**

 **Download on the
App Store**



Agrimesh
Technologies

MONITORING AND CONTROLS
DESIGNED FOR AGRICULTURE 4.0

www.agrimesh.net

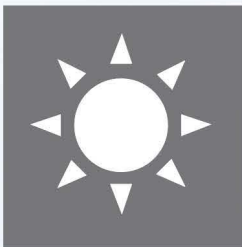


SENSOR INSTALLATION **SeeLow**



Quick, simple and wireless installation process

The **SeeLow** is designed to adjust to a flat or angled roof. It automatically adjusts to a vertical alignment resulting in an optimal positioning of the laser for precise measurements.



Powered by the sun

The SeeLow feed-bin monitor is a wireless solar powered device. With its low energy consumption, the **SeeLow** takes hourly measurements and reports real time inventory updates. Also, you can request a snapshot reading anytime.



Patented dust protection mechanism

With its patented dust protection mechanism, the **SeeLow** system helps keep the laser clean and allows for constant precision measurements.



Prevention and safety

Avoid taking the risk of climbing up your feed-bin to verify inventory levels. **SeeLow** gives you access to real time information of your inventory levels.



HOW TO CONFIGURE YOUR Seelow



No network configuration is required

Use the network of your choosing: Wired Internet or Cellular.

1. Plug the power cable into the «emHub»
2. Plug the adaptor into the wall inlet
3. Plug in the internet cable into the «emHub»



Simple and easy to use App

The Agrimesh application allows you to access your **Seelow** quickly and easily. All you have to do is download the AgriMesh app from the AppStore or Google Play and follow the simple instructions to access your Seelow.



Available Reports

Access inventory data 24/7 on the Agrimesh app. The **Seelow** monitor provides precise inventory flux in real time for a nearly unlimited quantity of feed bins. The system measures the consumption tendencies based on the feed variations in the feed bin.

All the data can easily be transferred onto a calculation sheet.

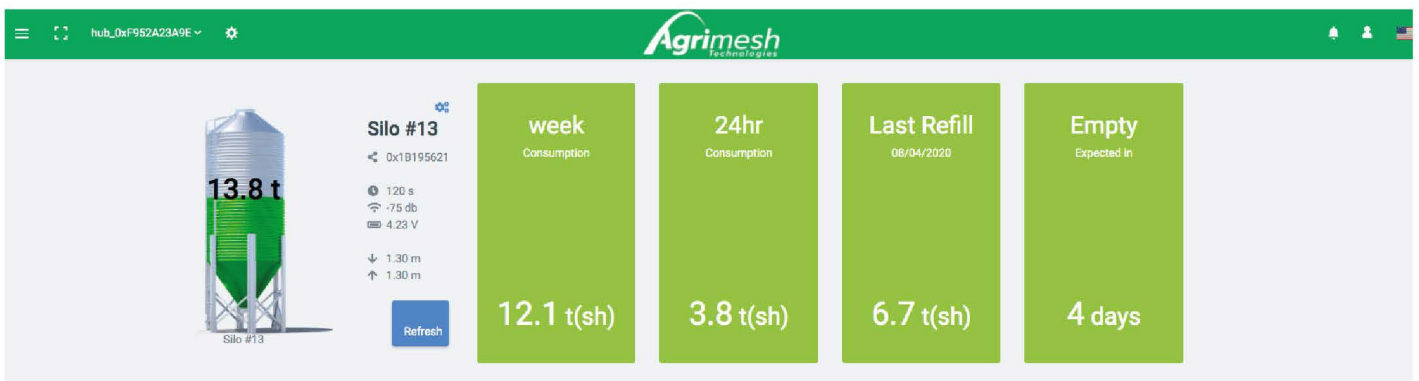


Customizable alert

A personalised alert system notifies you when a feed-bin has reached a critical inventory level, ultimately saving you costs and last-minute delivery orders.

REPORTS

Seelow



Day	height in meter	battery voltage	weight in short tons	volume in m³	percentage
Mar 11, 2020	2.4	4.2	7.7	9.4	35.2
Mar 12, 2020	0.3	4.2	19.8	26.1	98.1
Mar 13, 2020	0.9	4.2	16.3	21.4	80.5
Mar 14, 2020	1.2	4.2	14.5	19.0	71.4
Mar 15, 2020	1.5	4.2	12.7	16.6	62.4
Mar 16, 2020	1.7	4.2	11.5	15.0	56.3
Mar 17, 2020	1.9	4.2	10.4	13.4	50.3
Mar 18, 2020	2.0	4.2	9.8	12.6	47.3
Mar 19, 2020	0.9	4.2	16.3	21.4	80.5
Mar 20, 2020	0.9	4.2	16.3	21.4	80.5

HOW THE SYSTEM WORKS

SeeLow

Up to 255 Agrimesh products connected by a single emHub



The Agrimesh system creates its own "WiseMesh" network to communicate with the various equipment installed in your livestock buildings. The "WiseMesh" network exchanges data between your Agrimesh connected things and your emHub.

You can connect your emHub to a wired Internet or cellular network and have the possibility of connecting up to 255 SeeLow under the same emHub and the same network.

A background network diagram consisting of numerous small circles (nodes) connected by thin lines, creating a complex web-like structure. The nodes are of varying sizes and some have internal patterns. The overall color scheme is green, with the network lines and nodes appearing in a lighter shade against a darker green background. There are also some solid green rectangular shapes on the right side of the page.

STAY AHEAD OF YOUR COMPETITORS AND INCREASE YOUR PROFITABILITY

WITH



The technology that works !

4000, avenue Pinard, Saint-Hyacinthe (QC) CA J2S 8K4
T: 1 866 781-9861 • infos@agrimesh.net